

# ËNDRRA

KOMPLEKSI BANESOR



*Agu*III*Mi*



VIVERA  
INVEST

The logo for VIVERA INVEST features a stylized, golden-yellow 'V' shape composed of three parallel, downward-pointing chevron-like elements. Below this graphic, the word 'VIVERA' is written in a clean, uppercase, sans-serif font, with 'INVEST' in a smaller, similar font directly underneath.

**TONI invest**

The logo for TONI invest consists of a blue graphic on the left that resembles a stylized bar chart or a series of vertical bars of increasing height. To the right of this graphic, the text 'TONI invest' is displayed in a bold, blue, sans-serif font. A thin blue horizontal line underlines the entire text 'TONI invest'.

# 20 VITE PËRVOJË

Gjakovë 2022,

Të dashur lexues,

Për të mos bërë kompromis në cilësi, kërkohet përvojë shumëvjeqare në fushën e ndërtimit. Agullimi-a ka përfunduar me sukses shumë projekte madhështore të ndërtimit të lartë në qytete të ndryshme të Zvicrës dhe të Kosovës. Çdo banesë dhe lokal afarist ndërtohet me kujdes dhe përkushtim të vecantë deri në detajët më të vogla për të plotësuar nevojat familjare apo biznesore të klientëve tanë. Nga përzgjedhja e lokacionit, planifikimi i projektit, ndërtimit deri te shitjet dhe adminstrimi gjithmonë me fokus tek cilësia.

Kompleksi Ëndrra - mbresëlënës, nuk le asgjë për të dëshiruar dhe ofron një përvojë të gjerë dhe te rehatshme të jetesës.

ZEQIR HAXHIJA

Kryeshefi Ekzekutiv / CEO

PËR NJË CILËSI MË TË  
LARTË TË JETESËS



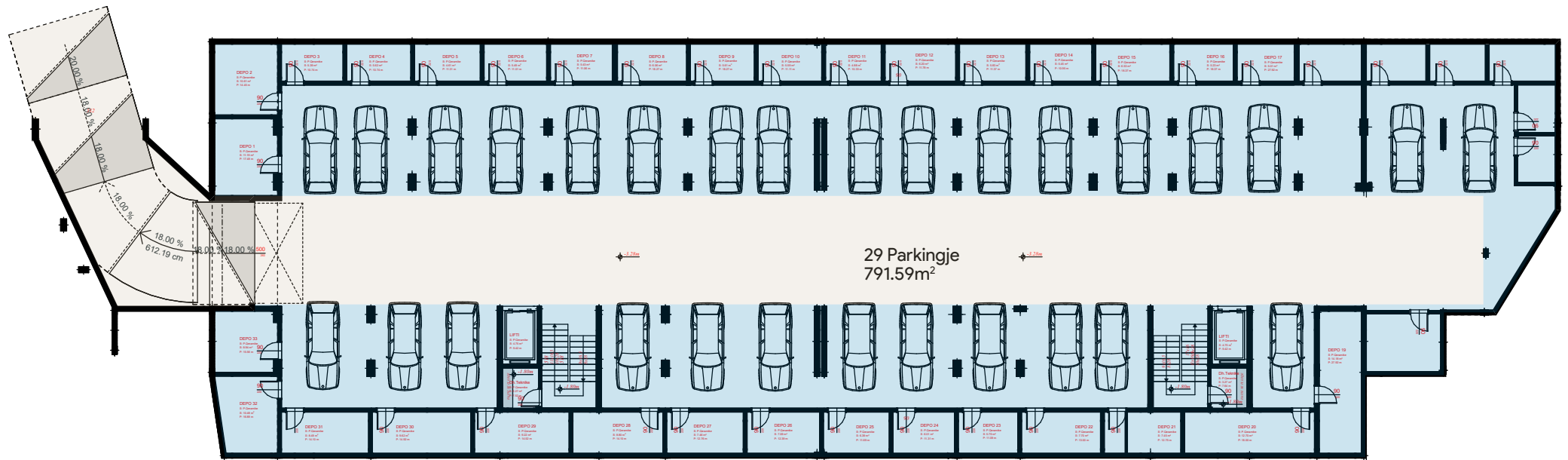
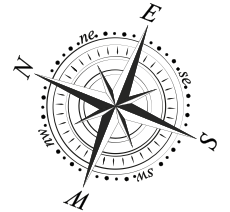
## **Ëndrra** kompleksi familjar në zemrën e Gjakovës.

E krijuar për t'u fokusuar në stilin e jetës aktive gjendet përballë rrugës kryesore, duke plotësuar kërkesat dhe nxitur mirëqenien, me një sipërfaqe **9170,18 m<sup>2</sup>**, garanton pamjen mbresëlënëse dhe qasjen e lehtë në të gjithë qytetin.

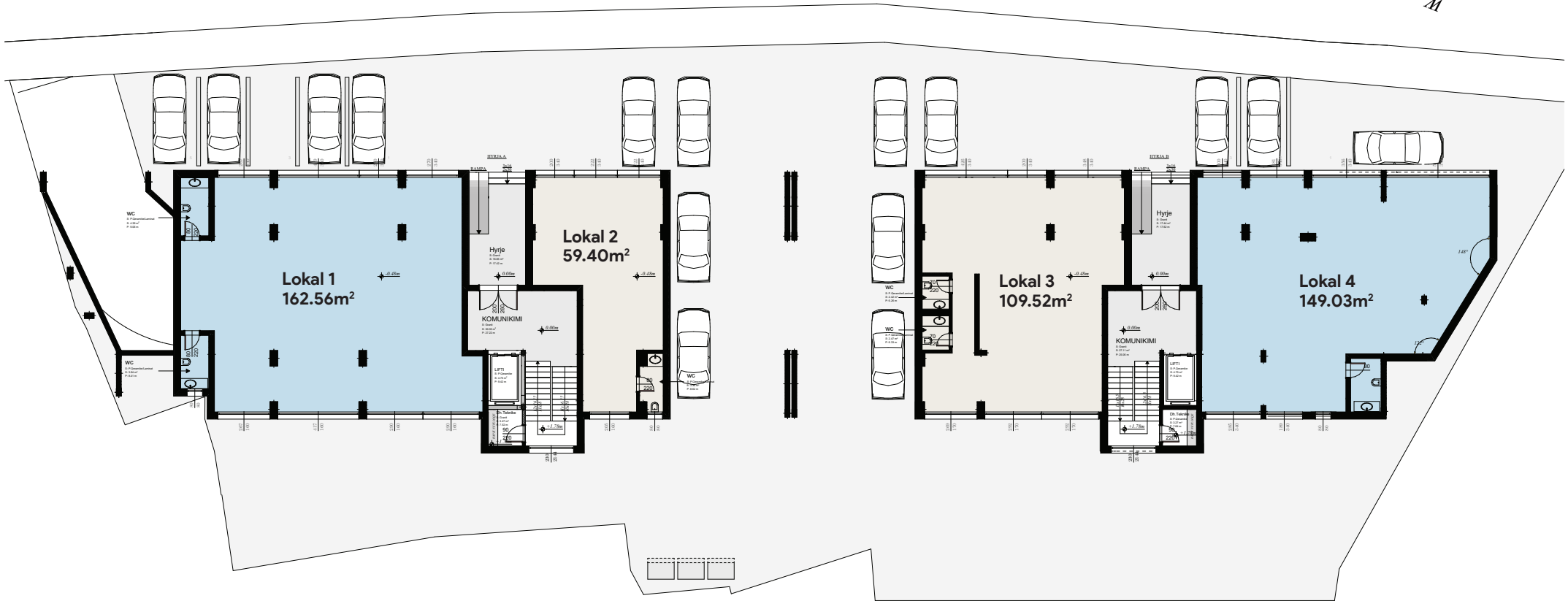
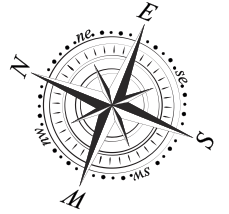
Në një rreze prej 1 km, ofron një sërë shërbimesh për të përmbushur nevojat tuaja.

Shtëpia e kulturës, Parku i qytetit, Posta, Stacioni i autobusëve, Markete, Xhamia e Sofës e shumë destinacione tjera, janë lehtë të qasshme nga dy anët e rrugës.

# Bodrumi



# Përdhesa







**2** *Lamela*

**54** *Apartamente*

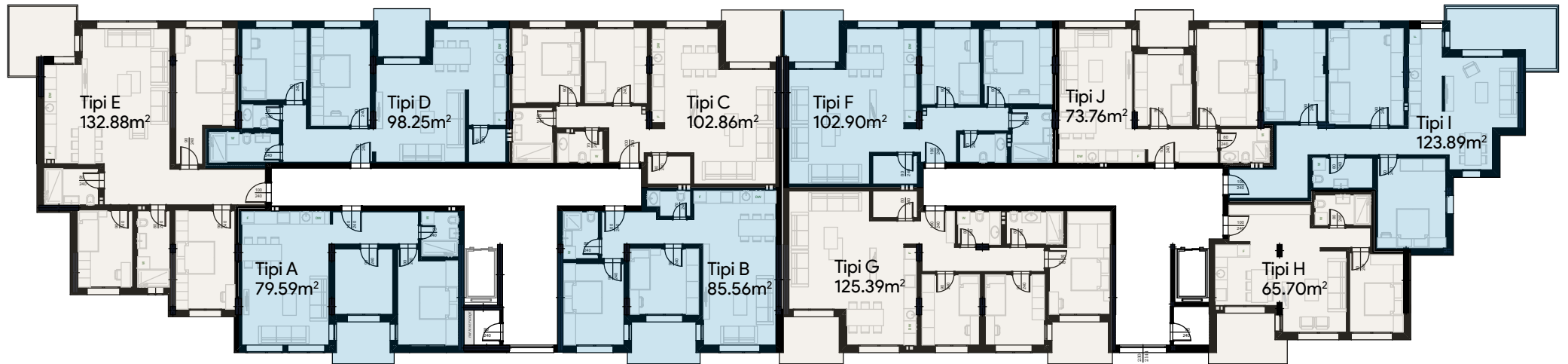
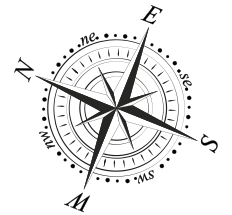
**4** *Penthouse*

**4** *Lokale Afariste*

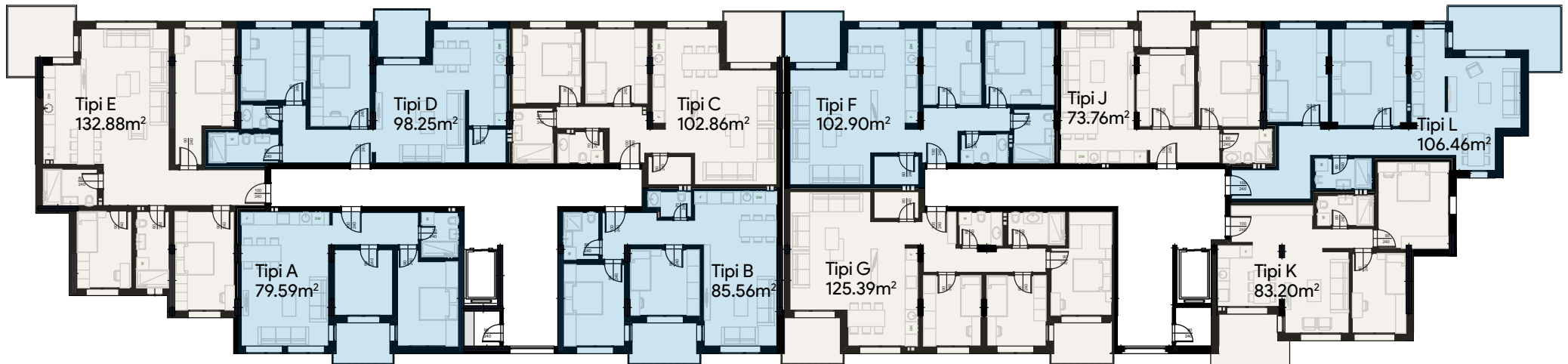
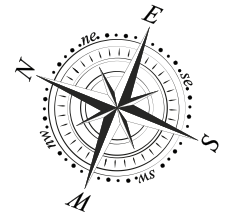
**29** *Garazha*

**36** *Depo*

# Kati Karakteristik 1, 2, 3



# Kati Karakteristik 4, 5, 6



# Tipi A

---

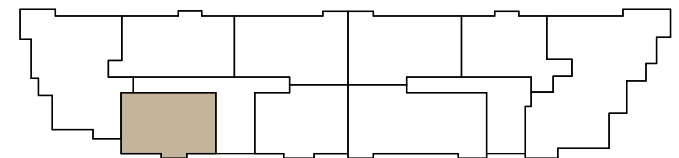
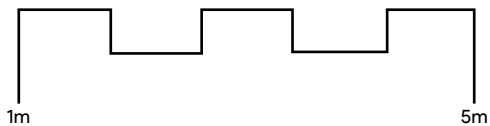
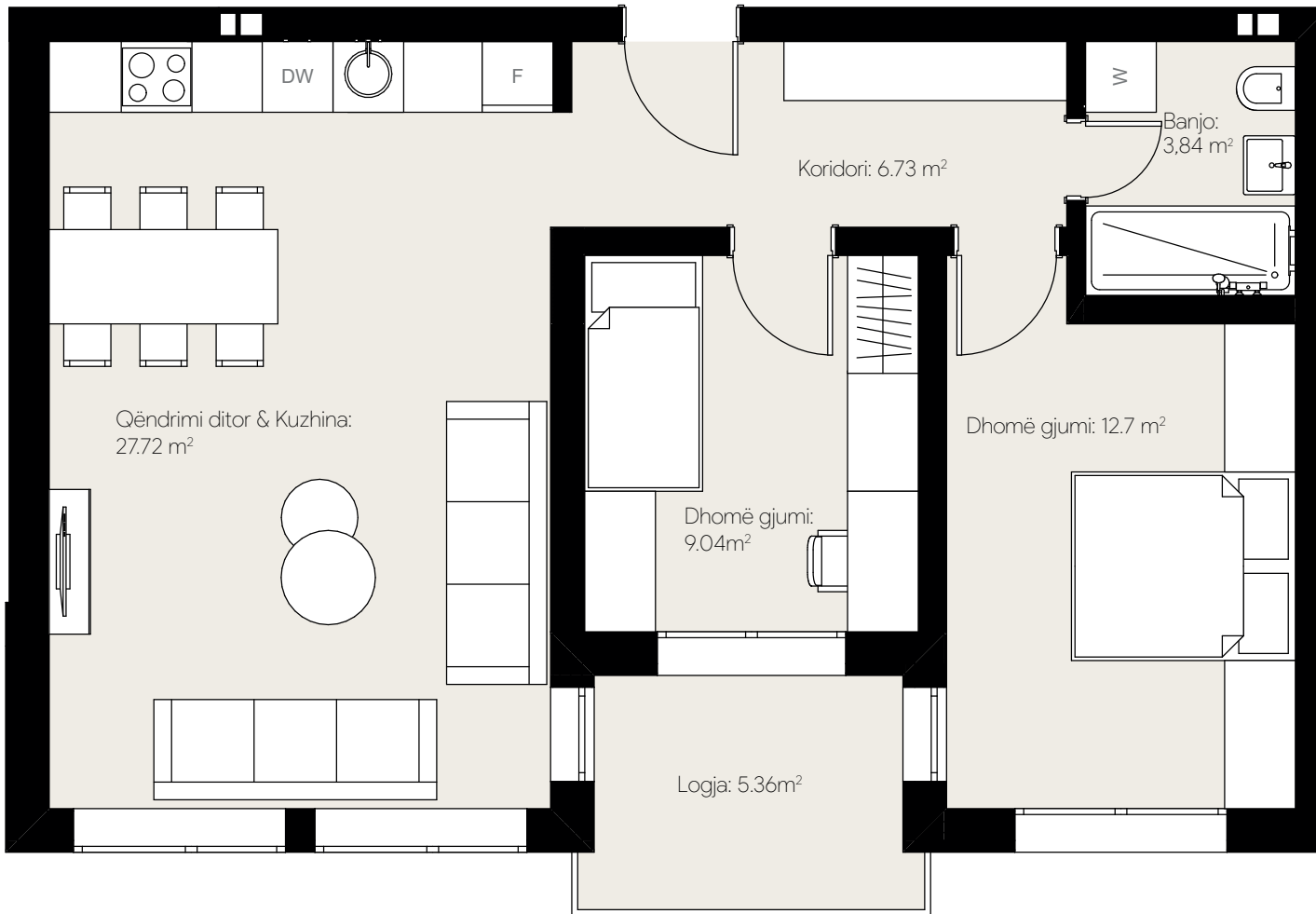
## Banesë me 2 dhoma gjumi

Sipërfaqja : 79.59 m<sup>2</sup>

Ndërtesa : Lamela A

Kati karakteristik 1-6





# Tipi B

---

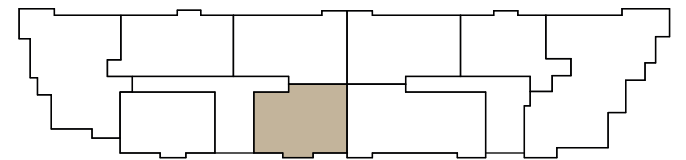
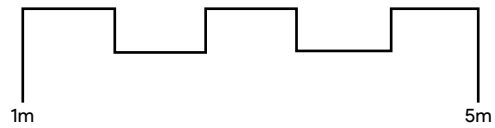
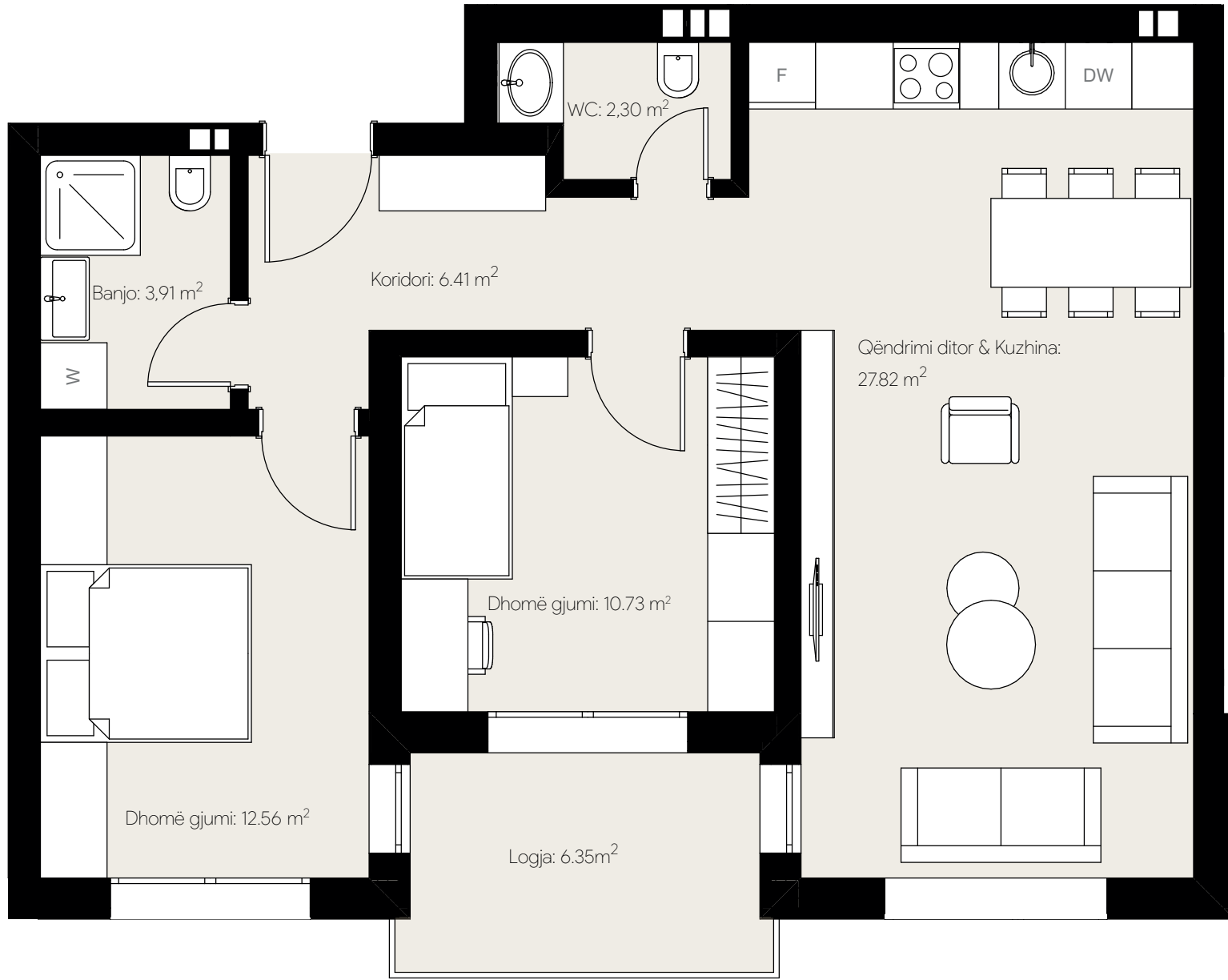
## Banesë me 2 dhoma gjumi

Sipërfaqja : 85.56 m<sup>2</sup>

Ndërtesa : Lamela A

Kati karakteristik 1-6





# Tipi C

**Banesë me 2 dhoma gjumi**

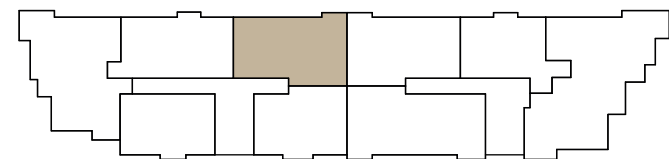
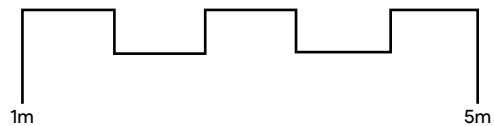
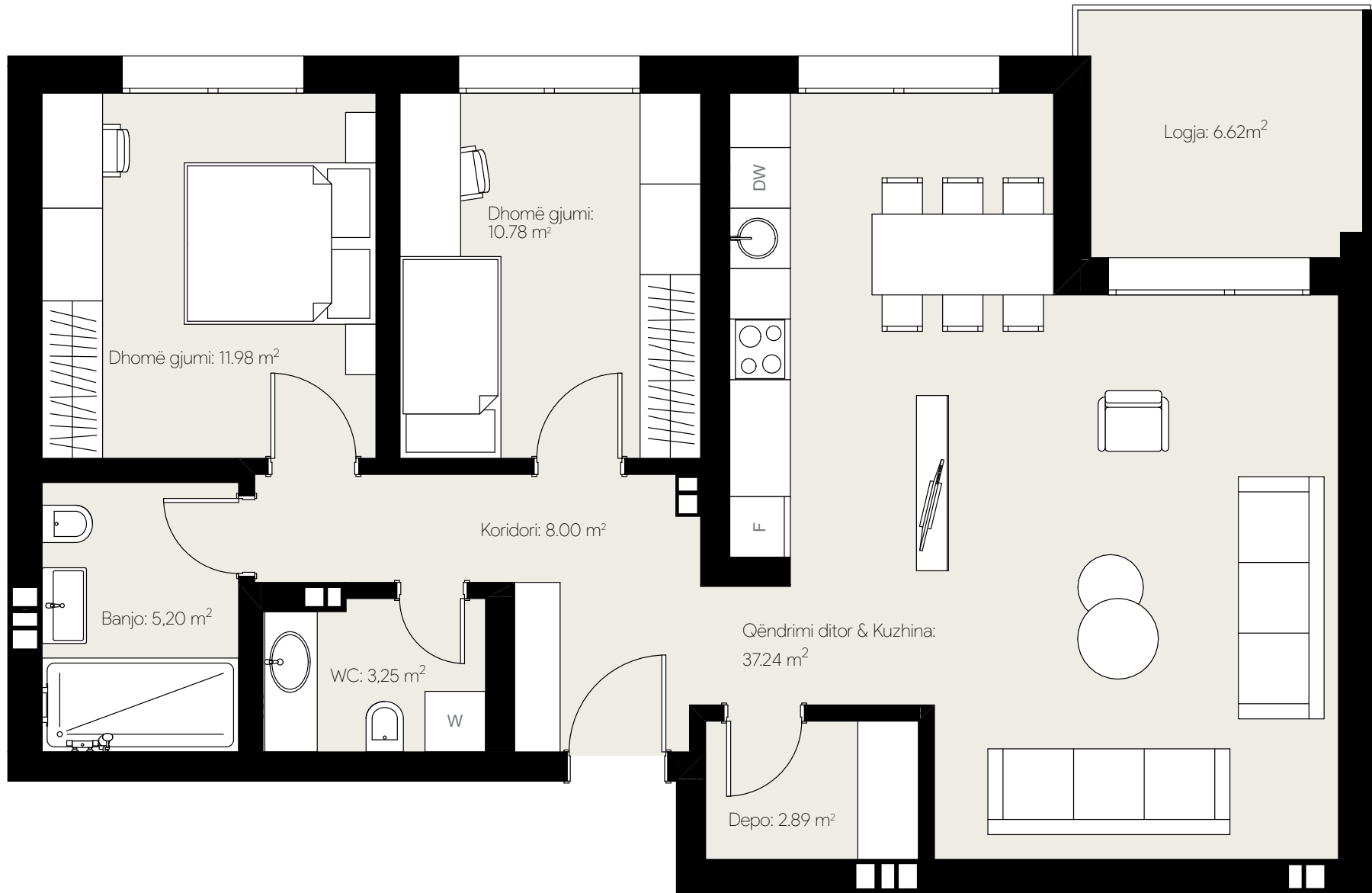
Sipërfaqja : 102.86 m<sup>2</sup>

Ndërtesa : Lamela A

Kati karakteristik 1-6







# Tipi D

---

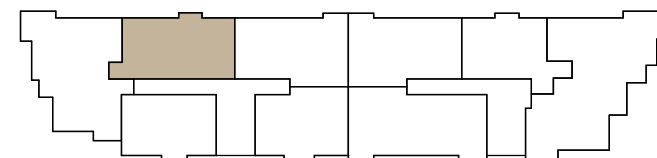
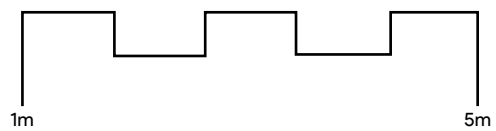
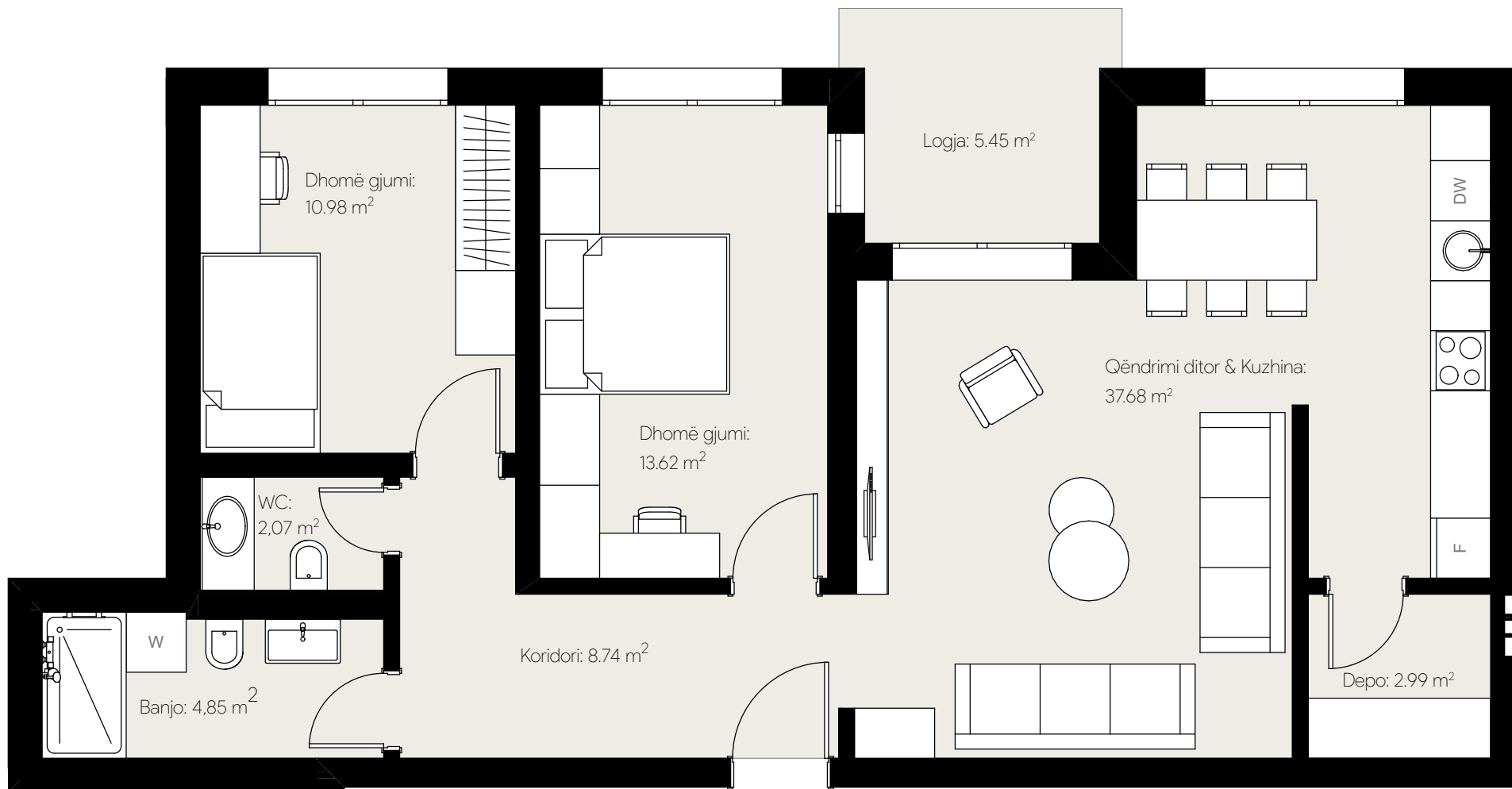
## Banesë me 2 dhoma gjumi

Sipërfaqja : 98.25 m<sup>2</sup>

Ndërtesa : Lamela A

Kati karakteristik 1-6





# Tipi E

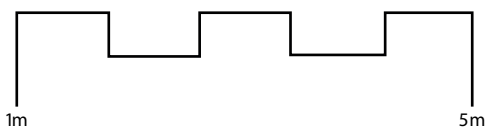
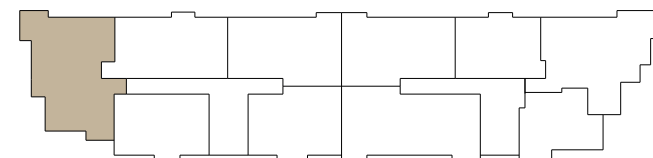
**Banesë me 3 dhoma gjumi**

Sipërfaqja : 132.88m<sup>2</sup>

Ndërtesa : Lamela A

Kati karakteristik 1-6





# Tipi F

---

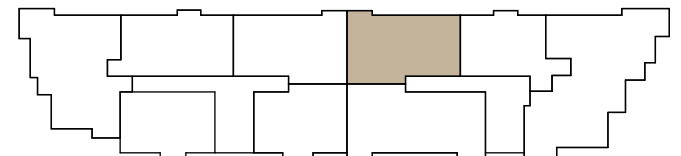
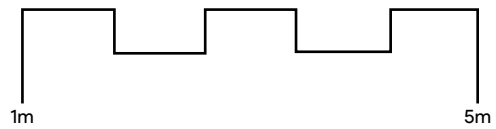
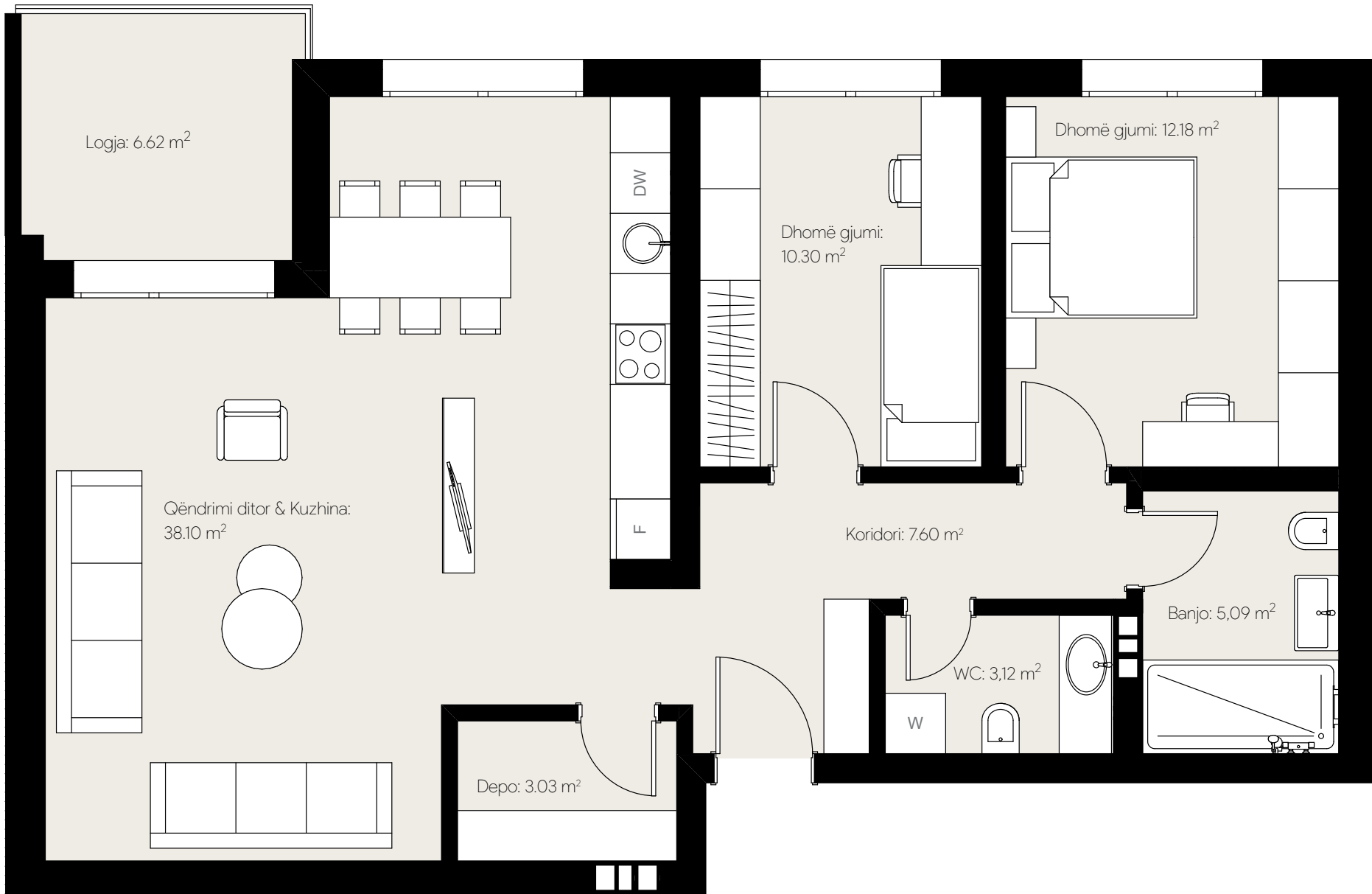
## Banesë me 2 dhoma gjumi

Sipërfaqja : 102.90 m<sup>2</sup>

Ndërtesa : Lamela B

Kati karakteristik 1-5





# Tipi G

---

## Banesë me 3 dhoma gjumi

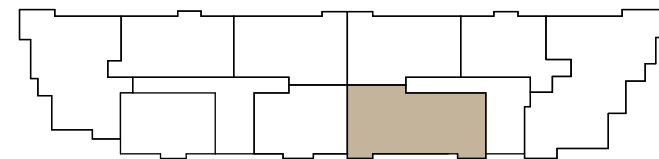
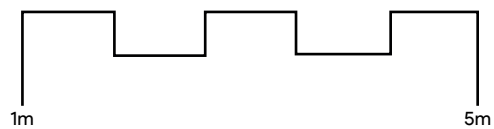
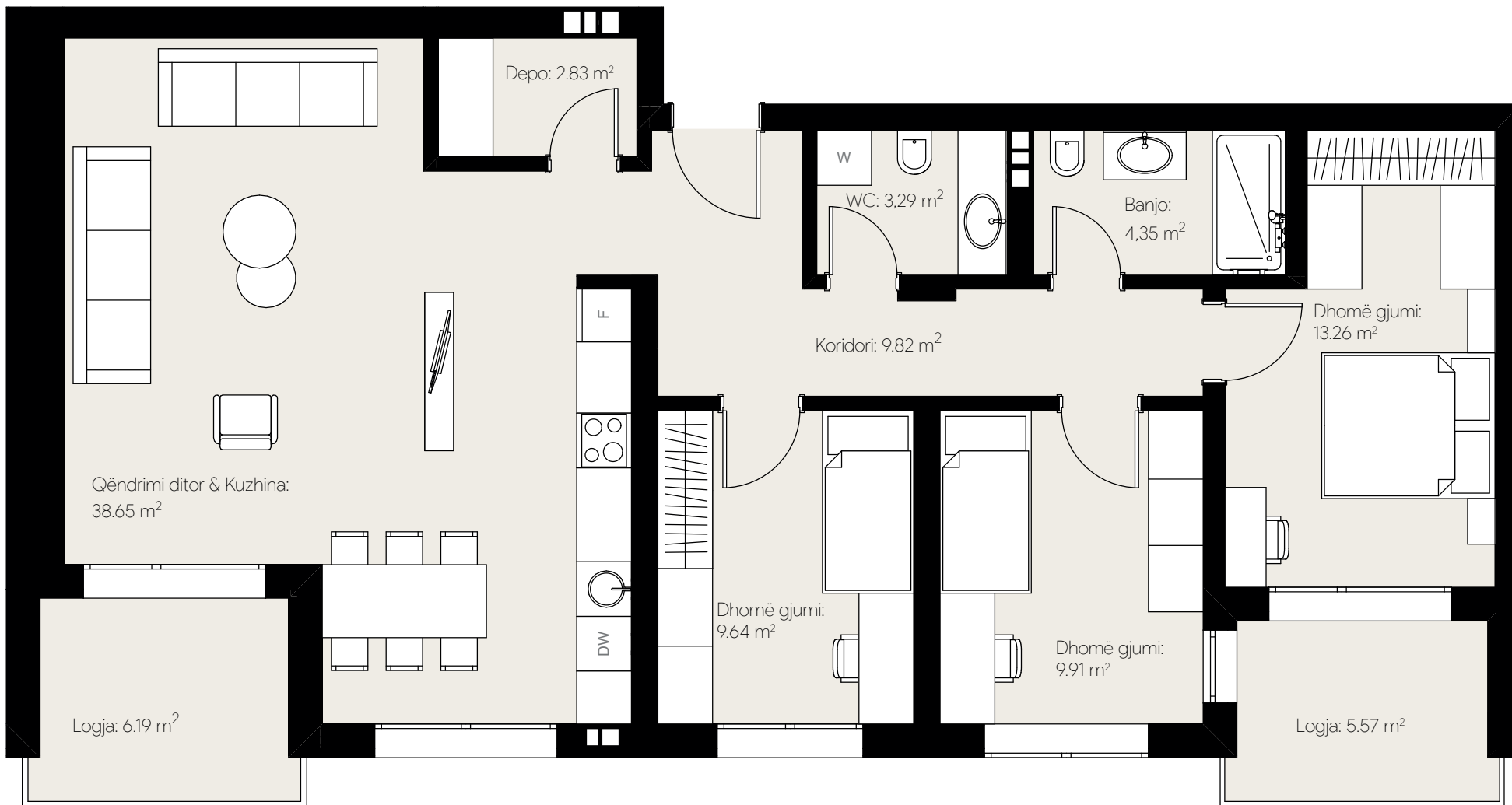
Sipërfaqja : 125.39 m<sup>2</sup>

Ndërtesa : Lamela B

Kati karakteristik 1-5







# Tipi H

---

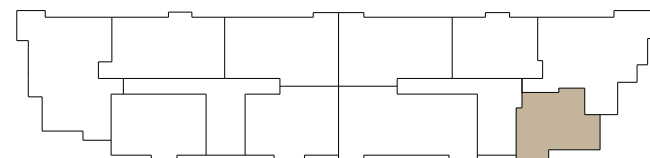
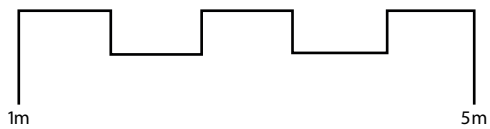
## Banesë me 1 dhomë gjumi

Sipërfaqja : 65.70 m<sup>2</sup>

Ndërtesa : Lamela B

Kati karakteristik 1-3





# Tipi I

---

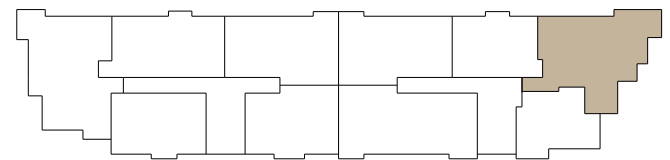
**Banesë me 3 dhoma gjumi**

Sipërfaqja : 123.89 m<sup>2</sup>

Ndërtesa : Lamela B

Kati Karakteristik 1-3





# Tipi J

---

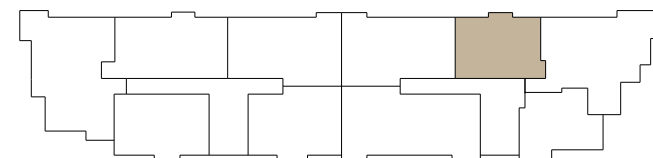
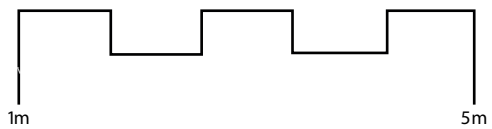
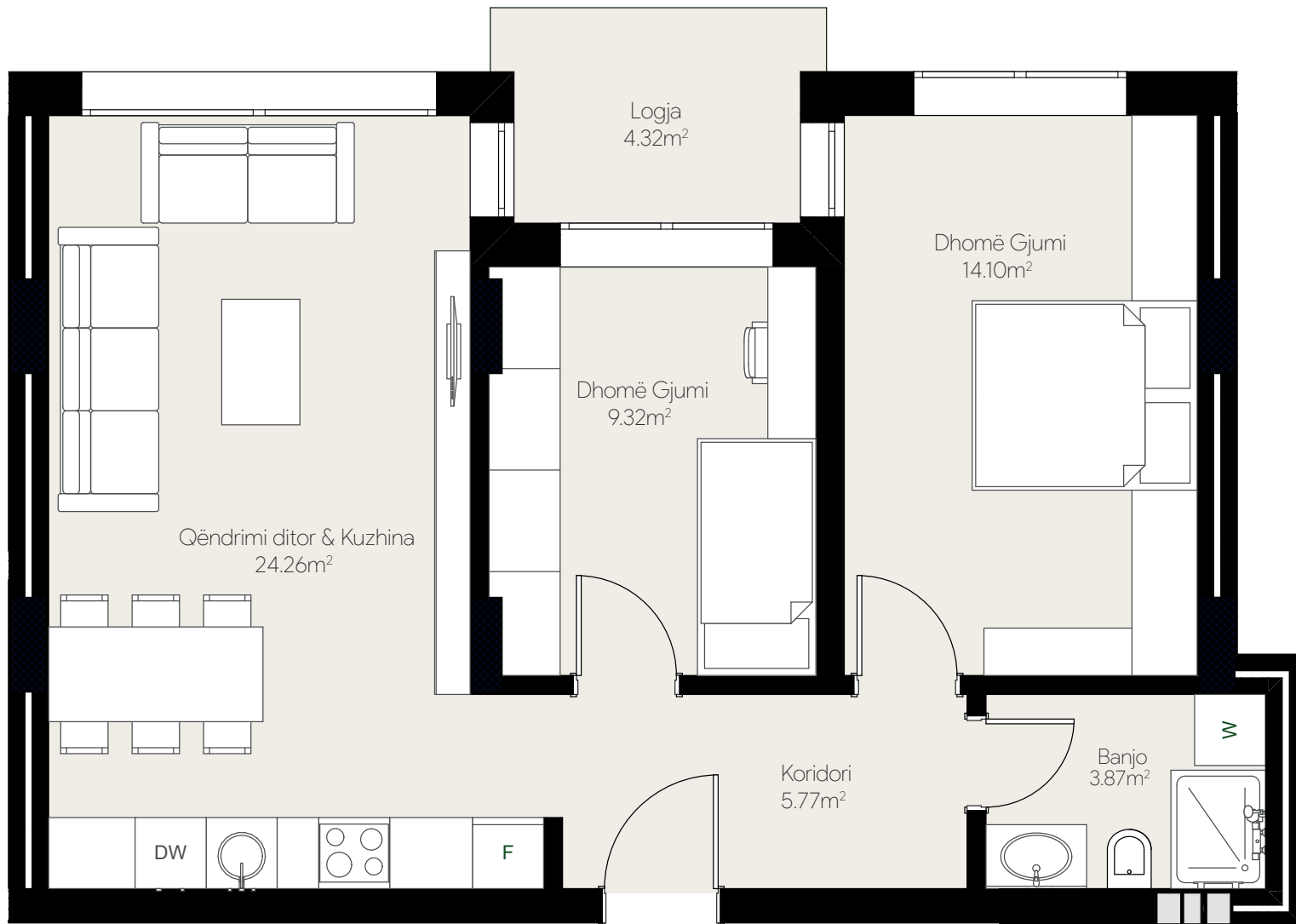
## Banesë me 2 dhoma gjumi

Sipërfaqja : 73.76 m<sup>2</sup>

Ndërtesa : Lamela B

Kati karakteristik 1-6





# Tipi K

---

Banesë me 2 dhoma gjumi

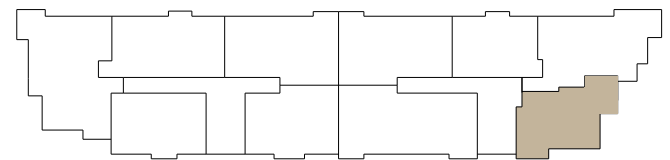
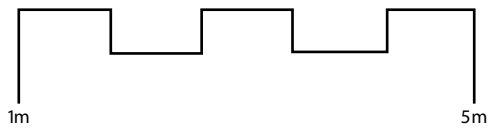
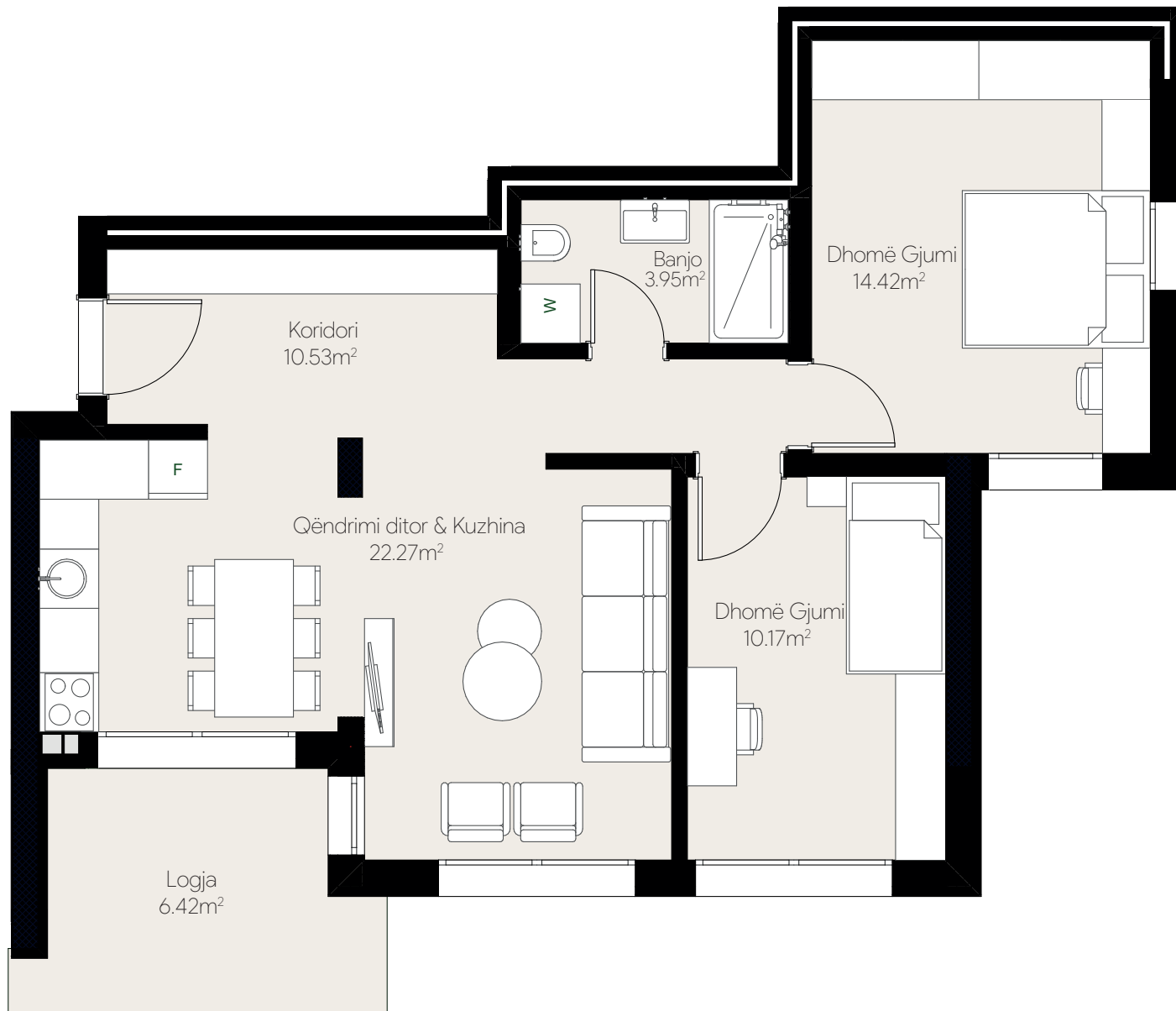
Sipërfaqja : 83.20 m<sup>2</sup>

Ndërtesa : Lamela B

Kati Karakteristik 4-6







# Tipi L

---

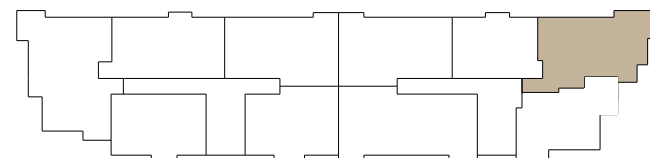
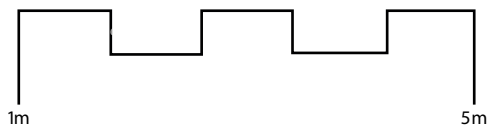
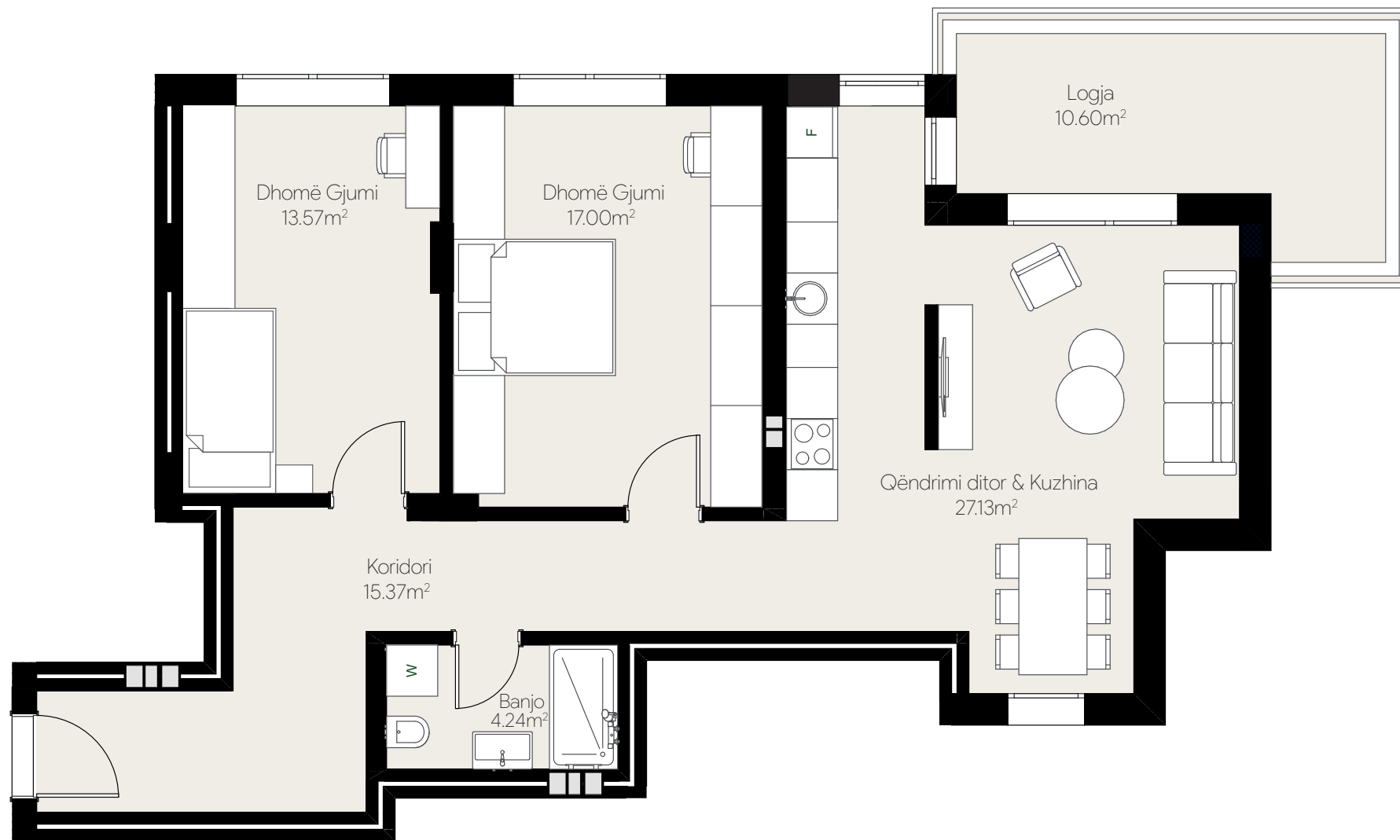
Banesë me 2 dhoma gjumi

Sipërfaqja : 106.46 m<sup>2</sup>

Ndërtesa : Lamela B

Kati Karakteristik 4-6

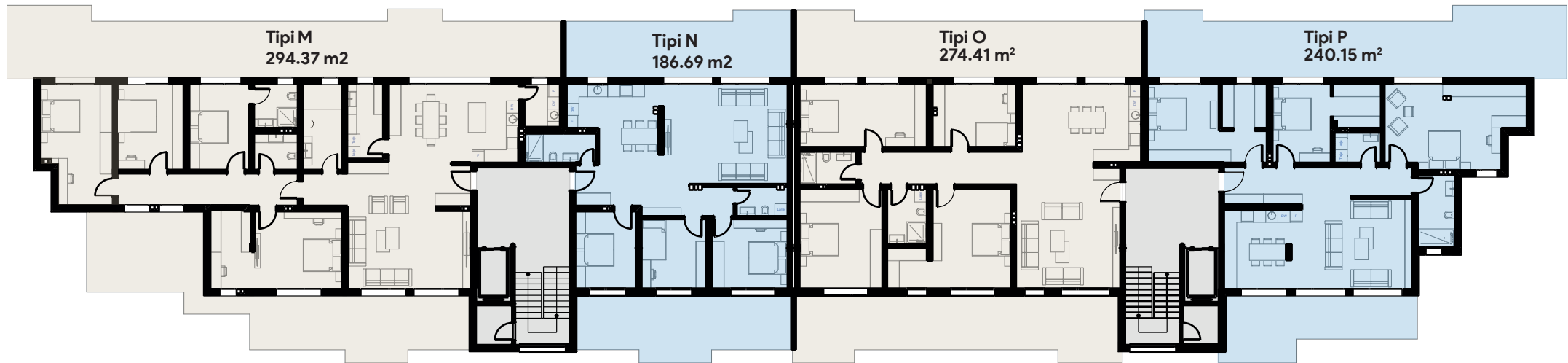
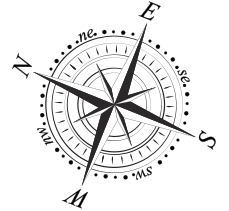




# PENTHOUSE



# Kulm i shfrytzueshëm



# Tipi M

---

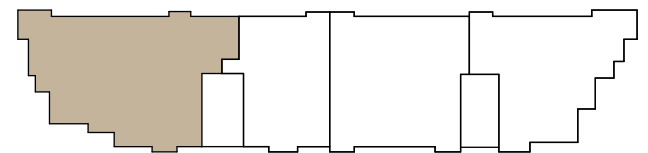
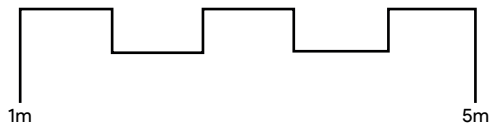
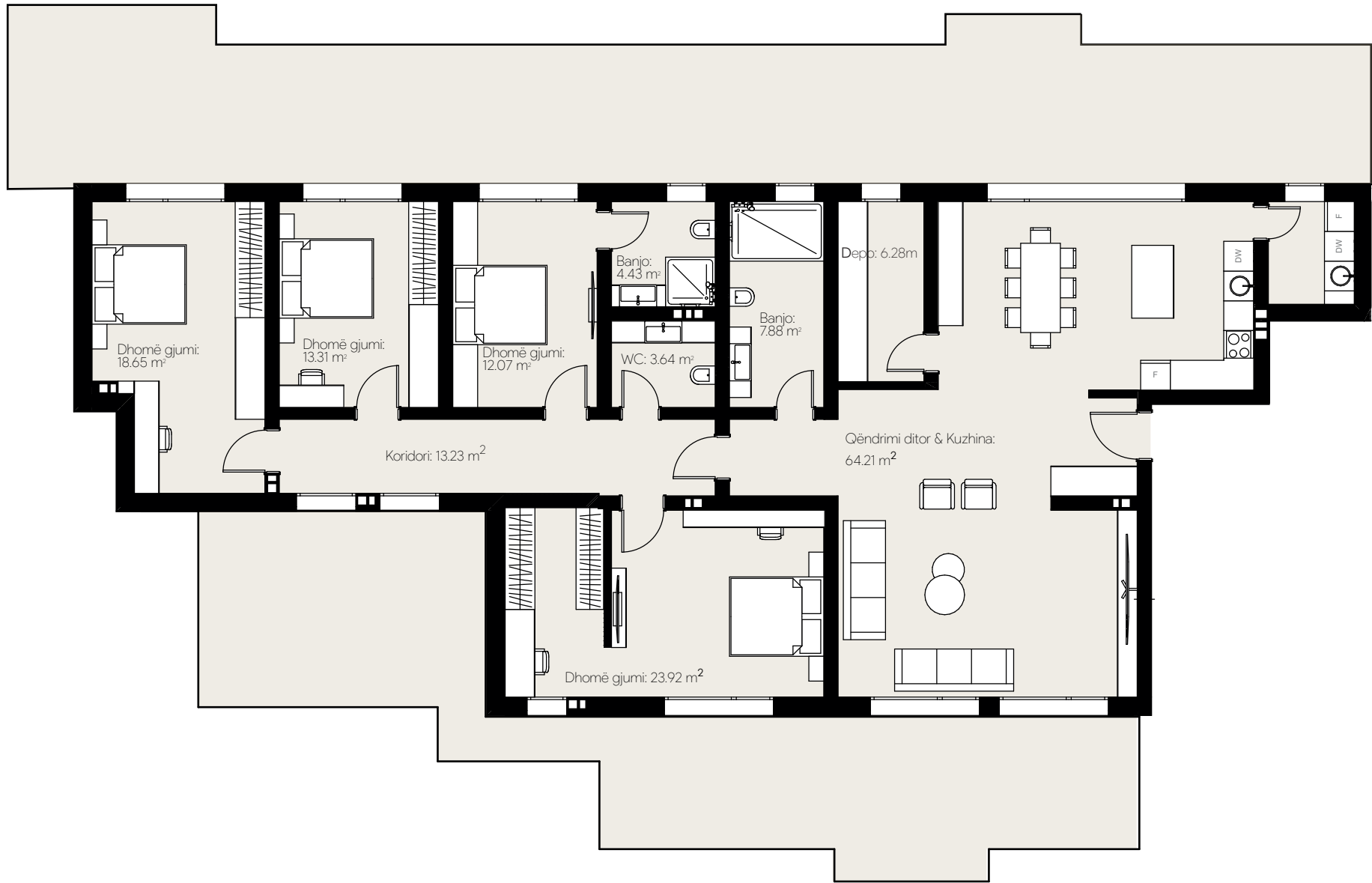
## Banesë me 4 dhoma gjumi

Sipërfaqja : 294.37 m<sup>2</sup>

Ndërtesa : Lamela A

Kulm i shfrytzueshëm





# Tipi N

---

## Banesë me 3 dhoma gjumi

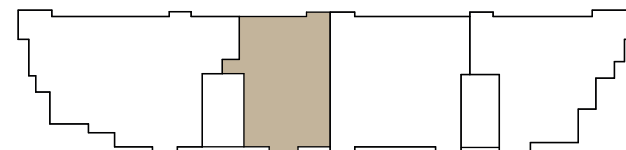
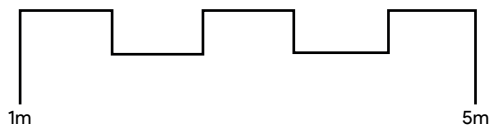
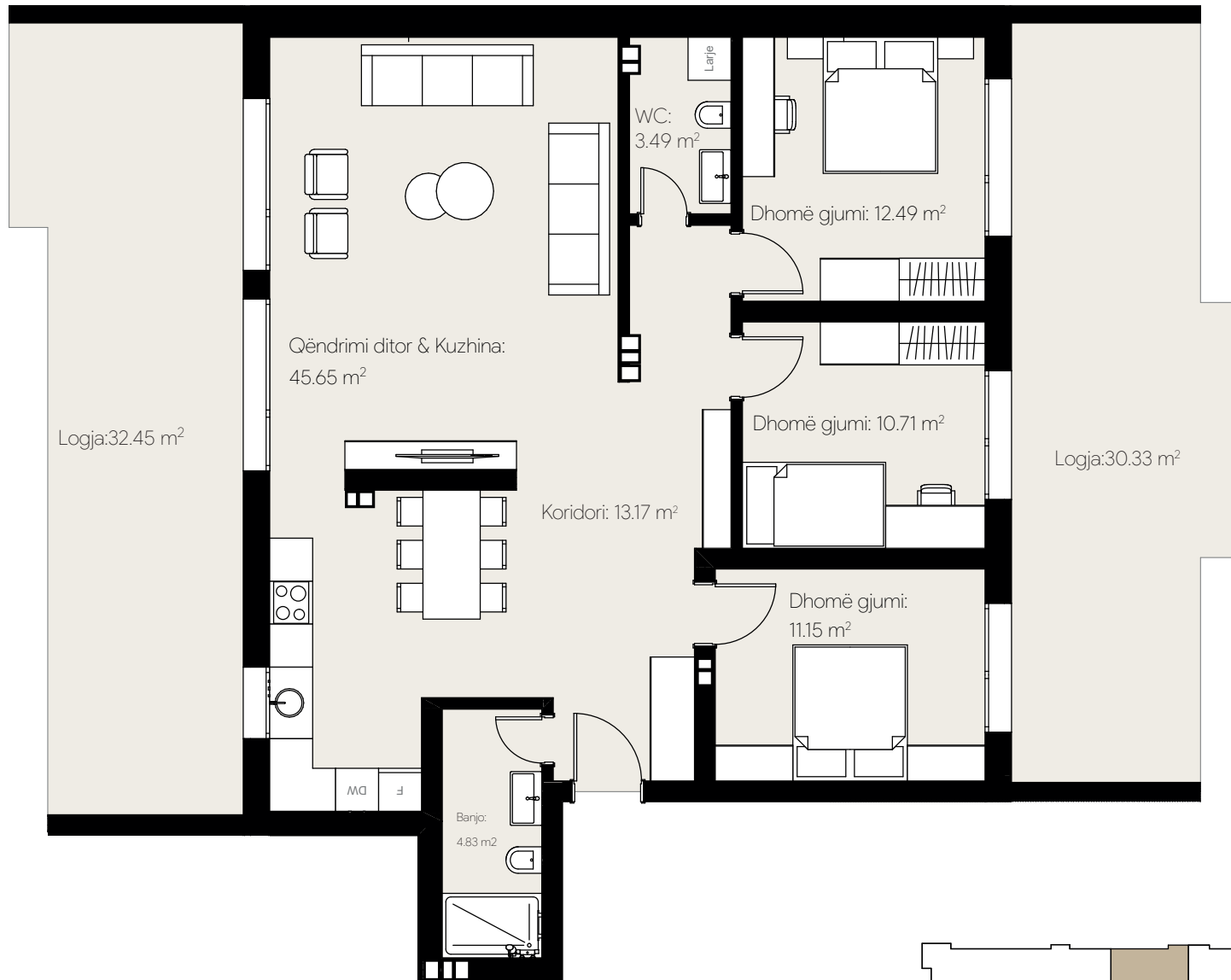
Sipërfaqja : 186.69 m<sup>2</sup>

Ndërtesa : Lamela A

Kulm i shfrytzueshëm







# Tipi O

---

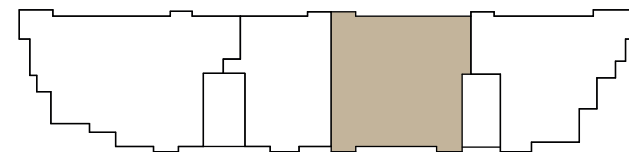
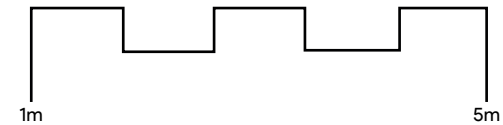
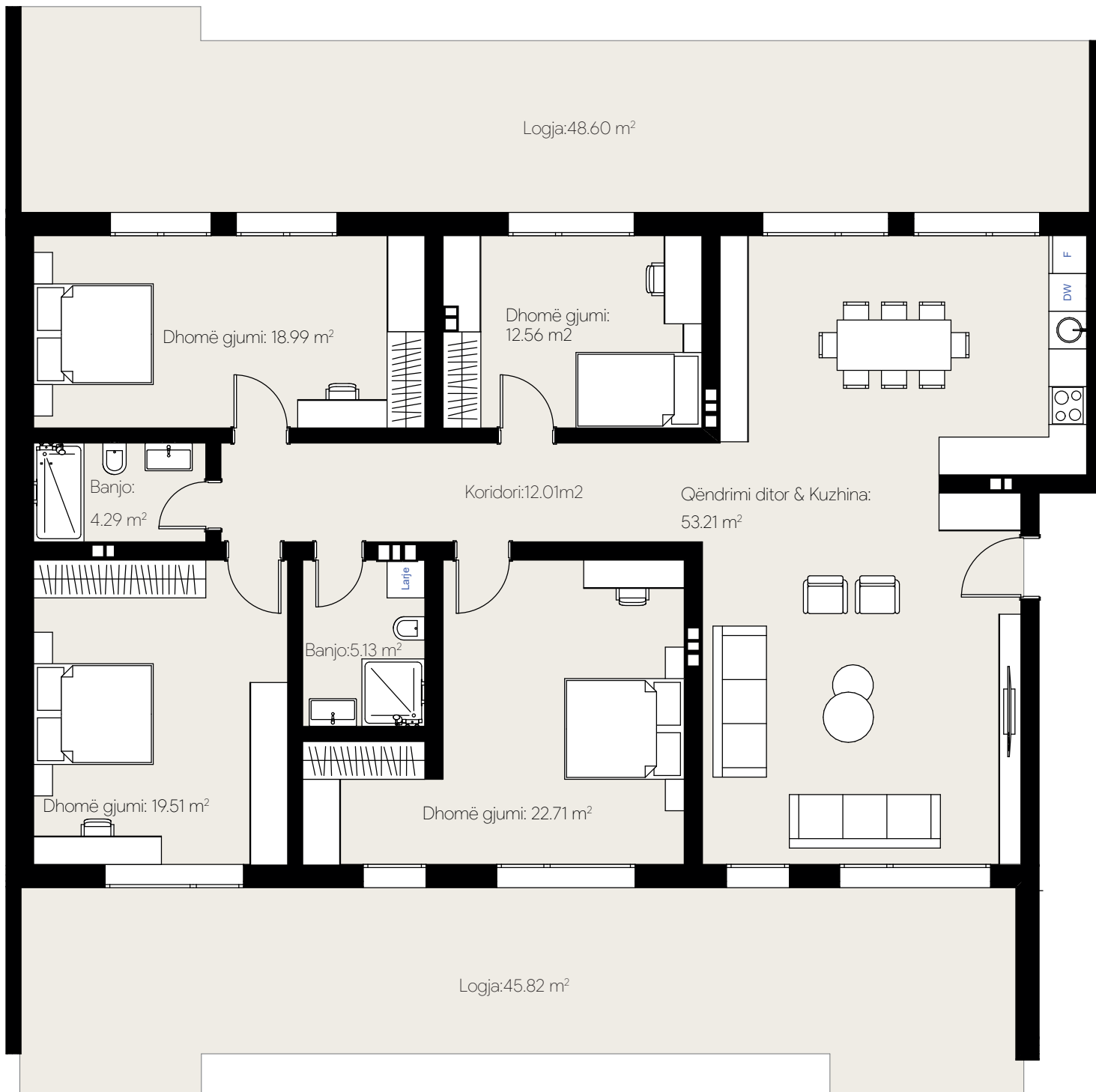
## Banesë me 4 dhoma gjumi

Sipërfaqja : 274.41 m<sup>2</sup>

Ndërtesa : Lamela B

Kulm i shfrytzueshëm





# Tipi P

---

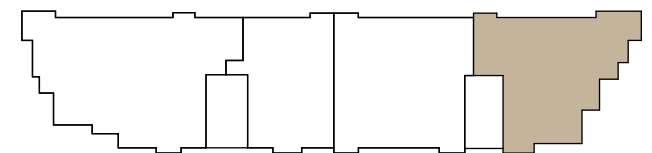
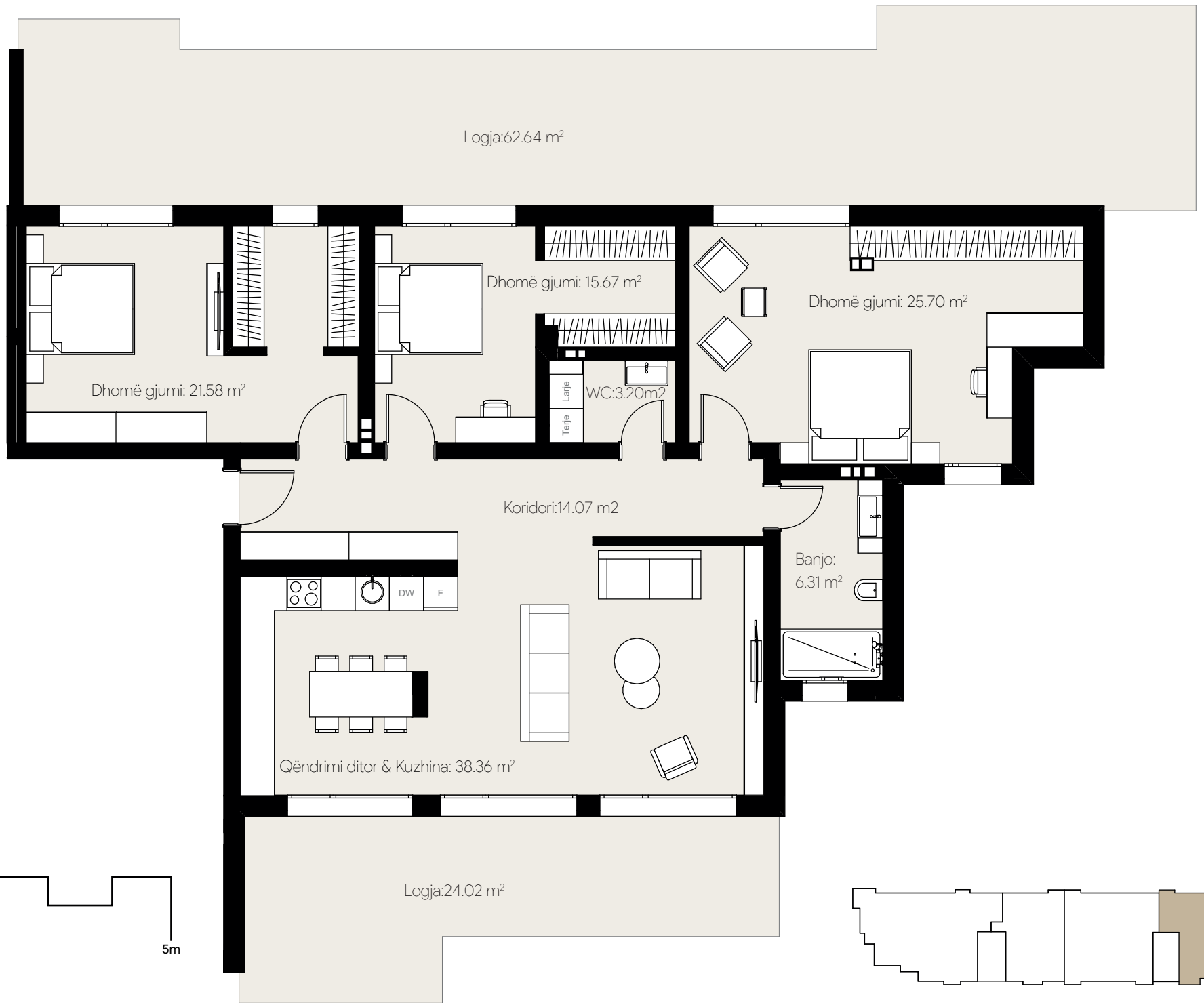
## Banesë me 3 dhoma gjumi

Sipërfaqja : 240.15 m<sup>2</sup>

Ndërtesa : Lamela B

Kulm i shfrytzueshëm







A Google Maps view of an urban area in Pristina, Kosovo. A prominent red location pin is placed in the center-right of the image, with the text 'Kompleksi Ëndrra' written in red below it. The map shows several streets, including 'Nënë Tereza' (a major road on the left) and 'Rruga e UÇK-së' (a road on the right). Various points of interest are marked with icons and labels, such as 'Monda Hair&Makeup', 'Frizer Cimi', 'ARIGAMINGZONE Video game store', 'Barbershop "Dika"', 'K.R.U GJAKOVA SH.A', 'Viva Fresh Store Shopping mall', and 'Top Shop'. The Google logo is visible at the bottom center.

# Kompleksi Ëndrra

Rruga e UÇK-së

Nënë Tereza

Nënë Tereza

Për informata dhe takime:



**Ing. Behar Gashi**  
Udhëheqes ekzekutiv

+383 (0) 45 691 000



**Fitim Haxhija**

+383 (0) 49 108 111  
+41 (0) 79 733 33 36  
viber, whatsapp

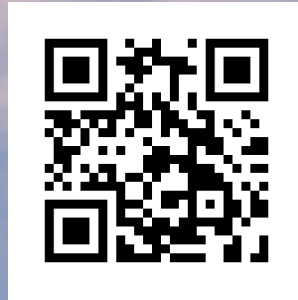


**Lum Binaku**

+383 (0) 49 270 264  
viber, whatsapp



[/AgulliMi/](#)



[agullimi.com](http://agullimi.com)



[/agullimii/](#)